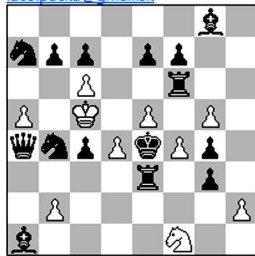


Ladislav Packa, Slovakia

laco.packa@gmail.sk



H#2

(10 + 15)

Twin Move a1 g1

a) diagram

1.g4*f3 e.p.! Kc5*c4 2.Rf6-f4 Sf1*g3#

1.c4*d3 e.p.?

For promotion Ba1 are six captures required (six white men missing). But if the last move was 0. ...d2-d4 so wBc1 could not be captured by pawn.

b) Ba1-->g1

1.c4*d3 e.p! h2*g3 2.Rf6-f5 Sf1-d2#

1.g4*f3 e.p.?

Last white move 0. ...f2-f4 is excluded, there are not enough captures to promotion bBg1.