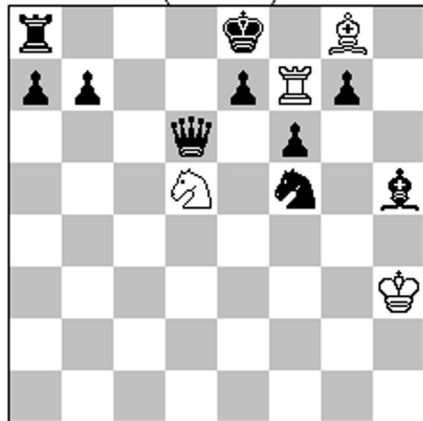


Vlaicu Crisan (Romania)



(4 + 10) h#2 B: bPf6 -> f3

A: Black can't castle as bKe8 had to move in order to allow wR to reach f7.

Solution: 1.Kd7 Kg2 2.Ke6 R*e7# White tempo and battery double check mate.

B: White has no longer a tempo move, but now wR could reach square f7 on another route.

Solution: 1.0-0-0 Rf8 2.Qb8 Be6# Pin mate.