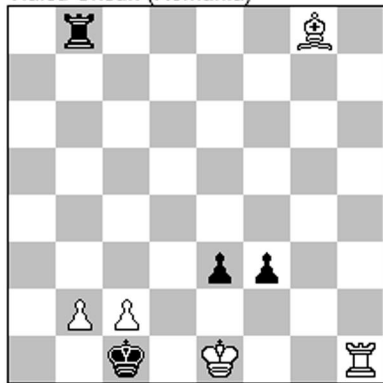


Vlaicu Crisan (Romania)



(5 + 4) h#2 B: -wPb2

A: Thematic try: 1.R*b2 Bb3 2.Kb1 0-0# but white can't castle as wKe1 had to move in order to allow bK to reach c1.

Solution: 1.K*c2 Rh4 2.Kd3 Bh7#

B: Without wPb2 the solution from the first twin doesn't work any more as c3 is no longer guarded.

But now the thematic try from the first twin works 1.R*b2 Bb3 2.Kb1 0-0#

Change of functions between wR and wB.